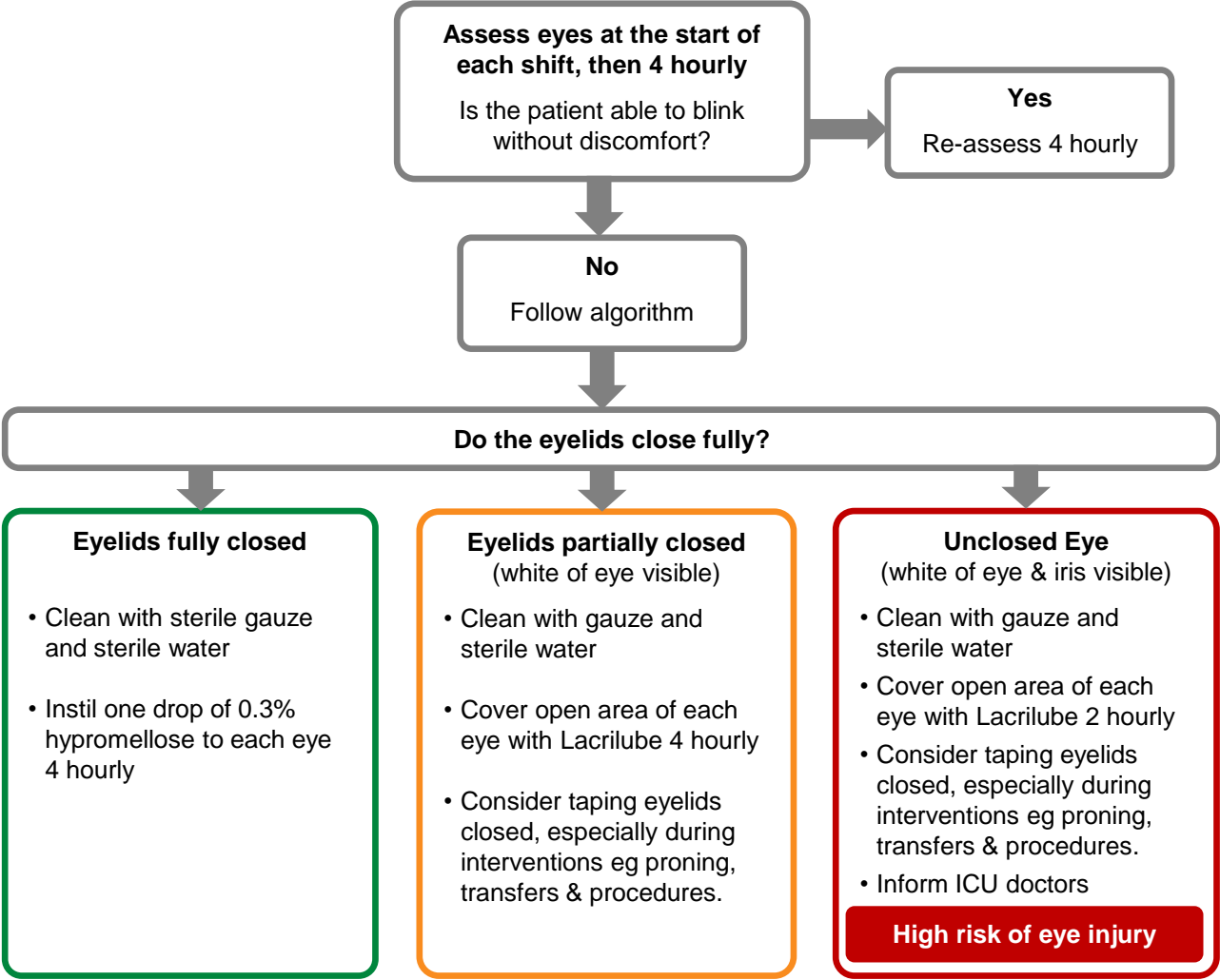


# Eye Care in Critical Care

**Aim** To provide guidance on nursing care for the eyes of patients in Critical Care  
**Scope** All adult patients in Critical Care.

Seek senior medical/ ophthalmology advice for patients with eye disease, infection or injury, including post-op eye surgery and chemo/radiotherapy related red eye.



**Hypromellose & Lacrilube**

- Use one bottle or tube for each eye
- Label bottle/tube left and right for individual eyes
- Prescribe on CIS, date each bottle/tube and discard after 28 day in locked pendant draw

**Remember Sources of Eye Injury**

- Pressure injury from masks, proning or equipment
- Drying of eyes from poor eyelid closure
- Direct eye trauma and corneal abrasion