

QUALITY | EDUCATION | SAFETY | TRAINING

Happy App going live!

The Staff Participation Engagement and Communication application (SPEaC-app), also known as the Happy App is going live this week. This will collect real-time, work-related mood feedback from you. This is an alternative way of highlighting any problems and frustrations, as well as positive experiences. This has been successfully implemented in Bristol and will be a great way of gathering information and your ideas to improve our service.

Phase 1 - available on all desktops - April 2018

Phase 2 - Raspberry Pi makeover - May 2018



"there were innovative approaches to the development and use of IT and social media" CQC June 2015

Education & Safety

Our multidisciplinary SOPs and Watchout notices continue to grab attention. We receive plaudits internationally. The design makes the key messages easy to read and ensure our approach is standardised and follows evidence based practice. For our new starters, you will see that we have digital displays throughout the unit providing reminders of our policies and lessons learnt. These are also available on the G drive and our open access portsmouthicu.com departmental website.



Kerrie Hopson @kerrie_hopson · 3h

This is genius! Would empower so many people to help patients to get going and #EndPjParalysis

Portsmouth ICU @icu_portsmouth
NEW SOP: Mobilisation in Critical Care
portsmouthicu.com/quality/?categ...
@soozyQ48



Nikki Sarkar @NikkiSarkar_ · Feb 17

A great visual and concise safety alert and education tool @NUHCriticalCare @NUHCritCareCG @CritCareMatron @MariaShallow. The Watch Out For...always gets a big 👍 from me, thanku for sharing @icu_portsmouth @stevemathieu75



Portsmouth ICU @icu_portsmouth
Watchout: Dislodged Adjustable Tracheostomy

portsmouthicu.com/quality/?post=...



Nikki Sarkar @NikkiSarkar_ · Feb 18

Replying to @Bec_storer @icu_portsmouth and 5 others
Couldn't agree more. It grabs you and within a blink of an eye you've been informed of an incident and educated on prevention. Also useful to look back at for recurring themes to challenge practice further. Great governance!



Rebecca Storer @Bec_storer · Feb 18

Replying to @NikkiSarkar_ @icu_portsmouth and 5 others
These are brilliant really informative! Harder to miss than an e mail!



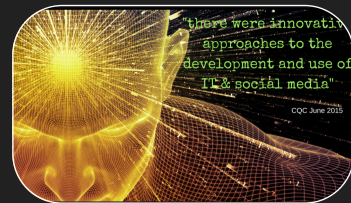
Som Sarkar @doc_som · Feb 17

'Lessons learnt' shouldn't be buried in minutes or email. We now use this excellent model from @icu_portsmouth & feedback to all colleagues more effectively after our monthly CG MDT meeting in Critical Care @SFHFT @Supasmile64 @SharonBaxter88 @Dr_Andy_Haynes @Paul_Moore_NHS



Portsmouth ICU @icu_portsmouth
Watch Out for....

Safety alerts from @icu_portsmouth - sharing lessons learned to improve patient care



Latest Presentations

34th Annual Congress of the college of Anaesthesiologists & Intensivists of Sri Lanka (Jan 2018)

Platform Presentation: Ethical Issues in ICM, inc organ donation
Pete McQuillan & Matt Williams

Workshops: ICM Clinical Scenarios (PMQ)

Euro Anaesthesia (June 2018)

Time to stop being relaxed about neuromuscular blockers
Stuart Cox and Paddy Tapley

RCN Critical Care Conference (2017)

Critical Care transfer in times of surge
Dave Thom and Stuart Cox

FICM RAFT2018

Junior Doctors Contract Update
Phil Young

Latest publications

Air Medical Journal

Decontamination of air ambulances
Stuart Cox (accepted)

BJA

Neuromuscular syringe swops
Stuart Cox & Paddy Tapley (accepted)

JICS

Temporising an extradural haematoma by intraosseous needle
Sarah Durnford & Nick Tarmey (2018)

The Critical analysis of the nocturnal distribution of light exposure (accepted)
Tom Craig & Steve Mathieu

Other news

New Essential Training Booklets will be out in next few weeks

Portsmouth ICU Mission



Best possible **CARE & OUTCOME** for our critically ill patients

Protect, & preserve **DIGNITY** through critical illness

SAFETY & QUALITY at the heart of everything we do

SUPPORT families & loved ones

Highest quality **TRAINING & DEVELOPMENT** for our staff



portsmouthicu.com



icu_portsmouth





CQC visit 17-19th April

We look forward to welcoming the CQC. We should all be proud of our unit and the contribution each of us brings. We have an opportunity again to show case all of the excellent work that we are doing. Any queries, please speak to Steve or Caroline.

SAFE CARING RESPONSIVE EFFECTIVE WELL LED

What are **you** most proud of?

Congratulations

Pride of Portsmouth - Best People Awards

Critical Care Admin Team WINNER

Sandra Taylor
Patient's Choice Award
WINNER

AAGBI Grant

Tom Craig - for CANDLE
(light intensity in Critical Care)

APLS completed

Becky Lovelock

Electronic QUARTS

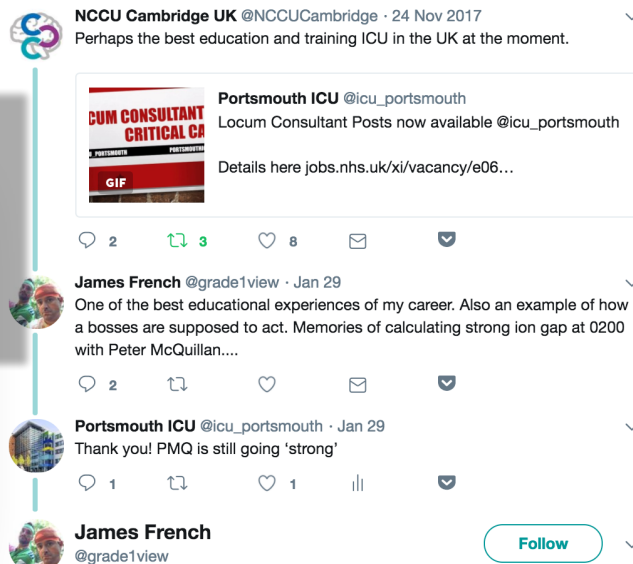
Our referral and transfer forms have been paper based for many years. Most units don't record 'off unit' activity but we know it is a significant part of our daily tasks. Analysing the data from all of this has not been easy, as you can imagine, from the number of events per day. That's all about to change! Within the next month we will be moving towards an **electronic database using a NEW WardWatcher module**. This has been designed in house, with the help and generous support of Brian Miller (the creator of wardwatcher). We are the first and only unit in the country to have this. It will allow us to keep much a better record of all the activity we are doing off the unit. All the referrals, support in the cath lab, transfers to CT, stabilisation of children, time critical transfers will be analysable at the touch of a button. More info coming soon....



Wednesday 2nd May,
10:30 - 12:30
Venue: Wine Vault ,
Albert Road, Southsea

For those new staff who have joined us from abroad, we have an overseas group to support Critical care staff. As always all staff involved in critical care are welcome as it is always nice for UK staff to come and support their colleagues settle into the unit and understand the stresses some people may be experiencing.

See Sadie, Phillippa, Timea or Jenny for more info



Replying to @icu_portsmouth @NCCUCambridge

Glad to hear it! I remember a few other members of the team, Dr Tweedale, Dr Sadler.....such a great job.....the hospital within a hospital.....

Relative survey (Dec 2017 - March 2018 n=35)

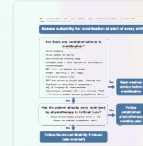
1. Welcome score - 97%
2. Promptness of information - 94%
3. Understanding information from Doctors - 94%
4. Understanding information from nurse - 97%
5. Sensitivity in imparting information Doctor - 90%
6. Sensitivity in imparting information Nurses - 93%
7. Courtesy of staff: Doctors - 97%
8. Courtesy of staff: Nurses - 97%
9. Compassion and Kindness: Nurses - 97%
10. Dignity and privacy were maintained - 94%
11. Staff treated pain and distress quickly and well - 92%
12. Organisation and teamwork within the department - 97%
13. Cleanliness of bed area - 97 %
14. Staff seen washing their hands - 97%
15. Quality of care during stay in Critical care - 97%
16. Quality of Care after discharge - 78%
17. Care of visitors score - 94%



TV&W CriticalCareODN
@TWWCritCareODN

Follow

Thanks for sharing @icu_portsmouth!
Would be good for the Network to see if we're all doing something similar.
@Kathlee88551525 @LeaverGill



Portsmouth ICU @icu_portsmouth
NEW SOP: Mobilisation in Critical Care
portsmouthicu.com/quality/?categ...
@soozyQ48

DID YOU KNOW?

Diggs' video has now been viewed 240,000 times!

<http://www.portsmouthicu.com/quality/?post=diggs-story&category=patient->

"Excellence does not just happen, leadership by senior consultants, sisters and Matron is clearly outstanding and reflected in this brilliant department" (name supplied)

"The reception team of Lauren, Amy and others was always helpful and considerate. Thank you to your 'front of house'" (name supplied)

LocSSIPS

Local Safety Standards for Invasive Procedures - we have these for emergency intubation checklist, Chest drain and central line insertions.

Chest Drain Insertion Checklist for Critical Care

1. Pre-Procedure Checks

- U1 Patient identity?
- U2 Indication?
- U3 Consent?
- U4 Time-out?
- U5 Appropriate antibiotic prophylaxis?
- U6 Appropriate analgesia?
- U7 Appropriate sedation?
- U8 Appropriate monitoring?
- U9 Appropriate resuscitation?
- U10 Appropriate equipment?
- U11 Appropriate personnel?
- U12 Appropriate environment?
- U13 Appropriate documentation?
- U14 Appropriate communication?
- U15 Appropriate consent?
- U16 Appropriate time-out?
- U17 Appropriate documentation?
- U18 Appropriate communication?
- U19 Appropriate consent?
- U20 Appropriate time-out?
- U21 Appropriate documentation?
- U22 Appropriate communication?
- U23 Appropriate consent?
- U24 Appropriate time-out?
- U25 Appropriate documentation?
- U26 Appropriate communication?
- U27 Appropriate consent?
- U28 Appropriate time-out?
- U29 Appropriate documentation?
- U30 Appropriate communication?

2. Time-Out

- U31 Time-out confirmed?
- U32 Appropriate antibiotic prophylaxis?
- U33 Appropriate analgesia?
- U34 Appropriate sedation?
- U35 Appropriate monitoring?
- U36 Appropriate resuscitation?
- U37 Appropriate equipment?
- U38 Appropriate personnel?
- U39 Appropriate environment?
- U40 Appropriate documentation?
- U41 Appropriate communication?
- U42 Appropriate consent?
- U43 Appropriate time-out?
- U44 Appropriate documentation?
- U45 Appropriate communication?
- U46 Appropriate consent?
- U47 Appropriate time-out?
- U48 Appropriate documentation?
- U49 Appropriate communication?
- U50 Appropriate consent?

3. Post-Procedure

- U51 Drain inserted correctly?
- U52 Drain secured correctly?
- U53 Drain connected correctly?
- U54 Drain functioning correctly?
- U55 Drain secured correctly?
- U56 Drain connected correctly?
- U57 Drain functioning correctly?
- U58 Drain secured correctly?
- U59 Drain connected correctly?
- U60 Drain functioning correctly?
- U61 Drain secured correctly?
- U62 Drain connected correctly?
- U63 Drain functioning correctly?
- U64 Drain secured correctly?
- U65 Drain connected correctly?
- U66 Drain functioning correctly?
- U67 Drain secured correctly?
- U68 Drain connected correctly?
- U69 Drain functioning correctly?
- U70 Drain secured correctly?

CHEST DRAIN INSERTION

Central Venous Catheter Insertion in Critical Care

1. Pre-Procedure Checks

- U1 Patient identity?
- U2 Indication?
- U3 Consent?
- U4 Time-out?
- U5 Appropriate antibiotic prophylaxis?
- U6 Appropriate analgesia?
- U7 Appropriate sedation?
- U8 Appropriate monitoring?
- U9 Appropriate resuscitation?
- U10 Appropriate equipment?
- U11 Appropriate personnel?
- U12 Appropriate environment?
- U13 Appropriate documentation?
- U14 Appropriate communication?
- U15 Appropriate consent?
- U16 Appropriate time-out?
- U17 Appropriate documentation?
- U18 Appropriate communication?
- U19 Appropriate consent?
- U20 Appropriate time-out?
- U21 Appropriate documentation?
- U22 Appropriate communication?
- U23 Appropriate consent?
- U24 Appropriate time-out?
- U25 Appropriate documentation?
- U26 Appropriate communication?
- U27 Appropriate consent?
- U28 Appropriate time-out?
- U29 Appropriate documentation?
- U30 Appropriate communication?

2. Time-Out

- U31 Time-out confirmed?
- U32 Appropriate antibiotic prophylaxis?
- U33 Appropriate analgesia?
- U34 Appropriate sedation?
- U35 Appropriate monitoring?
- U36 Appropriate resuscitation?
- U37 Appropriate equipment?
- U38 Appropriate personnel?
- U39 Appropriate environment?
- U40 Appropriate documentation?
- U41 Appropriate communication?
- U42 Appropriate consent?
- U43 Appropriate time-out?
- U44 Appropriate documentation?
- U45 Appropriate communication?
- U46 Appropriate consent?
- U47 Appropriate time-out?
- U48 Appropriate documentation?
- U49 Appropriate communication?
- U50 Appropriate consent?

3. Post-Procedure

- U51 Catheter inserted correctly?
- U52 Catheter secured correctly?
- U53 Catheter connected correctly?
- U54 Catheter functioning correctly?
- U55 Catheter secured correctly?
- U56 Catheter connected correctly?
- U57 Catheter functioning correctly?
- U58 Catheter secured correctly?
- U59 Catheter connected correctly?
- U60 Catheter functioning correctly?
- U61 Catheter secured correctly?
- U62 Catheter connected correctly?
- U63 Catheter functioning correctly?
- U64 Catheter secured correctly?
- U65 Catheter connected correctly?
- U66 Catheter functioning correctly?
- U67 Catheter secured correctly?
- U68 Catheter connected correctly?
- U69 Catheter functioning correctly?
- U70 Catheter secured correctly?

CVC

Tracheostomy Care in Critical Care

1. Pre-Procedure Checks

- U1 Patient identity?
- U2 Indication?
- U3 Consent?
- U4 Time-out?
- U5 Appropriate antibiotic prophylaxis?
- U6 Appropriate analgesia?
- U7 Appropriate sedation?
- U8 Appropriate monitoring?
- U9 Appropriate resuscitation?
- U10 Appropriate equipment?
- U11 Appropriate personnel?
- U12 Appropriate environment?
- U13 Appropriate documentation?
- U14 Appropriate communication?
- U15 Appropriate consent?
- U16 Appropriate time-out?
- U17 Appropriate documentation?
- U18 Appropriate communication?
- U19 Appropriate consent?
- U20 Appropriate time-out?
- U21 Appropriate documentation?
- U22 Appropriate communication?
- U23 Appropriate consent?
- U24 Appropriate time-out?
- U25 Appropriate documentation?
- U26 Appropriate communication?
- U27 Appropriate consent?
- U28 Appropriate time-out?
- U29 Appropriate documentation?
- U30 Appropriate communication?

2. Time-Out

- U31 Time-out confirmed?
- U32 Appropriate antibiotic prophylaxis?
- U33 Appropriate analgesia?
- U34 Appropriate sedation?
- U35 Appropriate monitoring?
- U36 Appropriate resuscitation?
- U37 Appropriate equipment?
- U38 Appropriate personnel?
- U39 Appropriate environment?
- U40 Appropriate documentation?
- U41 Appropriate communication?
- U42 Appropriate consent?
- U43 Appropriate time-out?
- U44 Appropriate documentation?
- U45 Appropriate communication?
- U46 Appropriate consent?
- U47 Appropriate time-out?
- U48 Appropriate documentation?
- U49 Appropriate communication?
- U50 Appropriate consent?

3. Post-Procedure

- U51 Tracheostomy inserted correctly?
- U52 Tracheostomy secured correctly?
- U53 Tracheostomy connected correctly?
- U54 Tracheostomy functioning correctly?
- U55 Tracheostomy secured correctly?
- U56 Tracheostomy connected correctly?
- U57 Tracheostomy functioning correctly?
- U58 Tracheostomy secured correctly?
- U59 Tracheostomy connected correctly?
- U60 Tracheostomy functioning correctly?
- U61 Tracheostomy secured correctly?
- U62 Tracheostomy connected correctly?
- U63 Tracheostomy functioning correctly?
- U64 Tracheostomy secured correctly?
- U65 Tracheostomy connected correctly?
- U66 Tracheostomy functioning correctly?
- U67 Tracheostomy secured correctly?
- U68 Tracheostomy connected correctly?
- U69 Tracheostomy functioning correctly?
- U70 Tracheostomy secured correctly?

TRACHEOSTOMY CARE

NOISE & LIGHT LEVELS ON ICU

Tom Craig has just received a national grant to progress our pilot study on light intensity (CANDLE). Lots of work coming on humanising the ICU environment. More details coming soon!



QUEST at Portsmouth ICU

Produced by:
Steve Mathieu & Caroline Cawkill

portsmouthicu.com @icu_portsmouth